

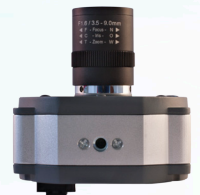
# IQeye 5 Series

## Megapixel IP Camera

### Features

- > Resolutions up to 2 MP
- > MJPEG Compression
- > 30 fps @ VGA to 17 fps @ 2 MP
- > Analog Video Service Port
- > Lightgrabber™ II Low-light Feature
- > Power Over Ethernet, 12-24 VDC, 24 VAC
- > Diecast Aluminum Enclosure
- > Indoor Camera
- > ONVIF and PSIA Compliant
- > 3 Year Warranty

The IQeye 5 Series delivers outstanding image quality in an attractive, low-profile package. With models supporting VGA, 1.3 MP and 2 MP resolutions, the 5 Series cameras are ideal for retail, schools and office environments where a balance of deterrence and discretion is required. Power over Ethernet, AC or DC power options provide the flexibility to replace an existing analog installation, or install in a new location. The analog service port allows quick focusing, resulting in exceptional image clarity in half the time. Industry standard ONVIF and PSIA API support ensures compatibility with most major VMS/NVR platforms.



**IQ** inVision 

33122 Valle Road  
San Juan Capistrano, CA  
92675-4853  
USA

toll free within US 877.850.0805  
phone +1.949.369.8100  
fax +1.949.369.8105

[www.iqeye.com](http://www.iqeye.com)

# IQeye 5 Series

Megapixel IP Camera



## Specifications

### Video

Compression	MJPEG
Sensor	1/3" CMOS
JPEG Compression Quality Settings	User Configurable
Shutter Speed	Auto/Programmable/Fixed
Image Settings	Saturation, Contrast, Brightness, Sharpness, Lightgrabber™ II
Exposure	User Configurable
White Balance	Auto

### Features

Motion Detection	User Configurable Windows
Cropping	User Configurable Windows
Analog Service Port	NTSC/PAL
System Integration	ONVIF, PSIA, IQfinder, IQmanager, IQsentry

### Network

Supported Protocols	TCP/IP, HTTP, DHCP, UDP, RTP, RTSP, DNS, ARP, ICMP, NTP, UPnP, ZeroConf, APIPA, SNMP, FTP, SMTP, Telnet
---------------------	---

Password Protection	Secure Multi-level
---------------------	--------------------

### Input/Output

Input Power	Power over Ethernet 802.3af Class 1, 24VAC, 12-24VDC
-------------	--

Power Consumption	< 2.8W [typical]
-------------------	------------------

AC Lighting	50 Hz/60 Hz Selectable
-------------	------------------------

Network Interface	RJ45 10Base-T/100Base-TX
-------------------	--------------------------

### Misc

Approvals	FCC, CE, UL
-----------	-------------

Temperature Range	32°F to 104°F, 0°C to 40°C
-------------------	----------------------------

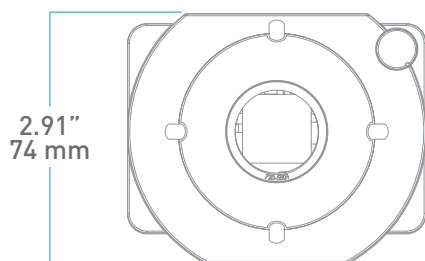
Weight (grams)	231 g
----------------	-------

Warranty	3 years
----------	---------

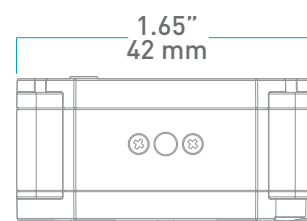
Lens Options	V9 Wide Angle Lens 1/3" CS, 3.5-9 mm, F1.6 V10 Wide Angle Lens 1/3" CS, 3.5-9 mm, F1.6 V11 Wide Angle Lens 1/3" CS, 3.5-9 mm, F1.6
--------------	--

Part Number	Maximum Resolution	Maximum Framerate	Min Illumination
IQ540SI-V9	SD480p - 720 x 480	33 fps	Color: 0.2 lux
IQ541SI-V10	1 MP - 1280 x 1024	18 fps	Color: 0.2 lux
IQ542SI-V11	2 MP - 1600 x 1200	17 fps	Color: 0.2 lux

## Dimensions



Front



Top