

## IQeye 510 & 511 Series

### 1. Plug the IQeye camera into the network

- If using PoE, plug the camera into an IEEE 802.3af PoE injector or switch.
- If using direct power, connect a 12-24V DC or 24V AC power supply to the supplied terminal block.

**Note:** Power supply polarity is not important.



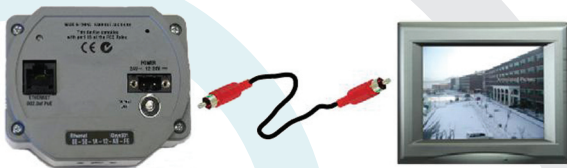
IQ5xx Series Power Options

### 2. Adjust field of view and focus

Field of view and focus adjustments on the IQ510 and IQ511 Series cameras can be performed using an analog monitor or a browser.

#### a. Using an Analog Monitor

To focus using analog video out, connect a field service monitor to the "Video Out" (RCA Connector) on the IQ510 or IQ511 camera. The analog video will be available until the first digital stream is requested via the Ethernet port. IQfocus is provided to simplify focusing. The overall image will be displayed with the center of the image digitally zoomed. Adjust the focus ring on the lens for the best possible focus.



IQ5xx Series RCA Connection

#### b. Using a Browser

IQeye cameras are configured for DHCP and will have an IP address assigned if a DHCP server is on the network. If a DHCP server is not available, the camera IP address will need to be configured using either IQfinder or IQmanager depending on the number of cameras being installed.

i. Insert the IQtools CD into the CD drive of the PC. When the CD starts, run IQfinder either from the CD by clicking "**Scan for IQeye cameras on my network**" or by installing IQfinder on the local PC by selecting "Install IQfinder".

ii. Click "**Scan for IQeye cameras on my network**" to find IQeye cameras. The detected cameras will be displayed in the IQfinder window. Select a camera from the list and click "**Assign IP**" to edit the selected camera's network settings.



IQtools CD

iii. The "**Assign IP**" window allows the IP address, Subnet, and Gateway of the camera to be changed and alternatively the camera can be configured for DHCP operation. Click the "**Apply**" button after making the desired change.

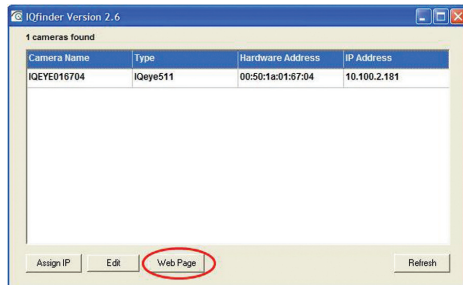
**Note:** Changing between DHCP and a static address will require the camera to be rebooted.



IQfinder - Assign IP Address

# Quick Install Guide

iv. To view a camera, double click a camera entry or highlight a camera in the list and click the “Web Page” button. The “Live” page will be displayed through the default browser (IE recommended). It is also possible to open Internet Explorer and enter the IP address of the IQeye camera in the address field of the browser:



*IQfinder - Web Page*

v. Adjust the focus ring on the lens for the best possible focus.

### 3. Additional Configuration

To perform further configuration of the camera, click on the “Setup” tab.

**Note:** The default username is “root” and the default password is “system”.

### 4. Additional Documentation

For additional information and technical documents, see the IQtools CD, or visit [www.iqeye.com/faq](http://www.iqeye.com/faq).

**IQinVision**

33122 Valle Road  
San Juan Capistrano, CA92675-4853 USA  
Toll-Free within U.S 877.850.0805  
phone + 1.949.369.8100  
fax + 1.949.369.8105

[www.iqeye.com](http://www.iqeye.com)

901-0233 Rev. A