

## IQmedia Player

### PRODUCT DESCRIPTION

IQmedia Player is software that can be downloaded from the [www.iqeye.com](http://www.iqeye.com) website for free, and is ideal for users who want to playback recordings made with IQrecorder directly on a workstation without using the camera for playback. IQmedia Player allows searching and playback of video stored on CF or SDHC media removed from IQeye cameras, or from external network servers.

### INSTALLATION / UPDATE

To utilize IQmedia Player first install / update the follow.

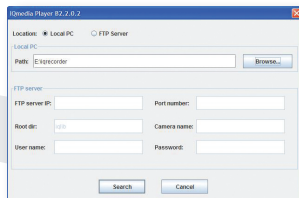
**License** - The IQrecorder license file must be purchased through an IQeye representative or a demo license can be obtained by contacting technical support at [support@iqeye.com](mailto:support@iqeye.com). The license will load onto the PRO LINE camera via the license upload under the "Security" tab.

**IQmedia Player** - Available as a setup.exe file that installs the IQmedia Player interface, and can be installed on every workstation that will use the IQmedia Player feature. Download the IQmedia Player from the [www.iqeye.com](http://www.iqeye.com) website.

**Firmware** - Ensure that the latest firmware that supports IQrecorder is installed on the PRO LINE camera. Download the latest firmware from the [www.iqeye.com](http://www.iqeye.com) website.

### STARTING IQMEDIA PLAYER

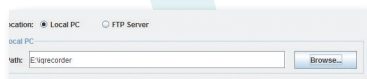
IQmedia Player can be found at: "Start/All Programs/IQinVision/IQmedia Player".



Upon boot-up, the IQmedia Player search page appears. Based on where the video is stored select either "Local PC" or "FTP Server".

### PLAYBACK FROM LOCAL PC

Remove the CF or SDHC media card from the IQeye PRO LINE camera and insert the media card, or copy the video files to the hard disk drive of the workstation. On the search page select "Local PC". Then manually enter or browse to the path where the video files are stored.



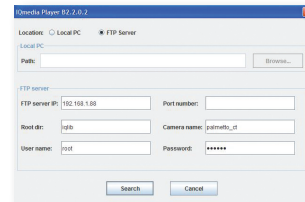
Click the search button to find video, and begin playback.

Search

### PLAYBACK FROM FTP SERVER

If the IQeye PRO LINE camera is recording to an external network server the IQmedia Player can playback video directly from the network server without using the camera for playback.

On the search page select "FTP Server", and then enter the following.



**FTP server IP** – Enter the IP address of the server where video from an IQeye PRO LINE camera is stored. When playing back from a remote location, enter the IP address of the router here.

**Port number** – When video is being played back from a remote location and port forwarding is being used on the router enter the port number here. This field can be left blank if the default FTP port 21 is being used.

**Root dir** – Enter the root directory where images are stored by IQrecorder. The default root directory is "iqlib".

**Camera name** – Enter the camera name to playback video from the camera.

**User name** – Enter the user name the camera uses when logging into the external network server. The username can be obtained from the person responsible for managing the external network server.

**Password** – Specify the password the camera uses when logging into the external network server. Valid password characters are the alphanumeric characters (a-z,A-Z,0-9). The password can be obtained from the person responsible for managing the external network server.

Click the search button to find video, and begin playback.

### IQMEDIA PLAYER – PLAYBACK

The IQmedia Player playback page provides an intuitive and powerful interface for searching, viewing, and playing recorded video from PRO LINE cameras using IQrecorder.



Use the help guide on the playback page to get an overview of all the functions provided with the IQmedia Player.